

Installing A New Language File In IndexU Deluxe

Installing A New Language File In IndexU Deluxe written by Bruce J Peresky © 2009 All Rights Reserved.

No portion of this document may be duplicated without written consent of the author.

IndexU © 2009 NiceCoder, All Rights Reserved

Additional guides for IndexU can be found at IndexUSupport.com

[Nicecoder Forums](#) [Nicecoder Support](#)

[Step 1 - Backup](#)

[Step 2 - Requirements](#)

[Step 3 - Examine The Structure](#)

[Step 4 - Uploading a new language file](#)

[Step 5 - Language File Issues](#)

Step 1 - Backup

Please ensure you have a complete backup of your website and database before proceeding.

Step 2 - Requirements

Some servers have issues with translations files. This is not an IndexU issue, this is a server issue. Failure to meet these requirements will result in translations not working.

Requirements

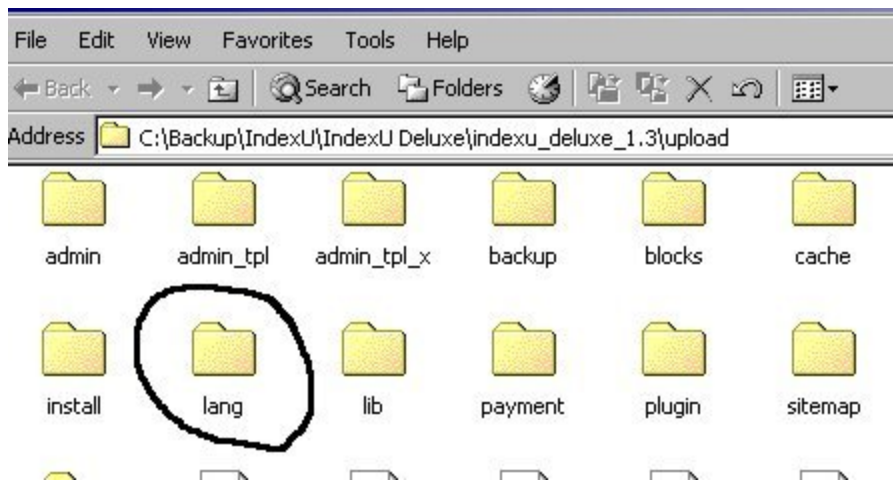
IndexU must be set to use UTF-8

Your database must be using UTF-8

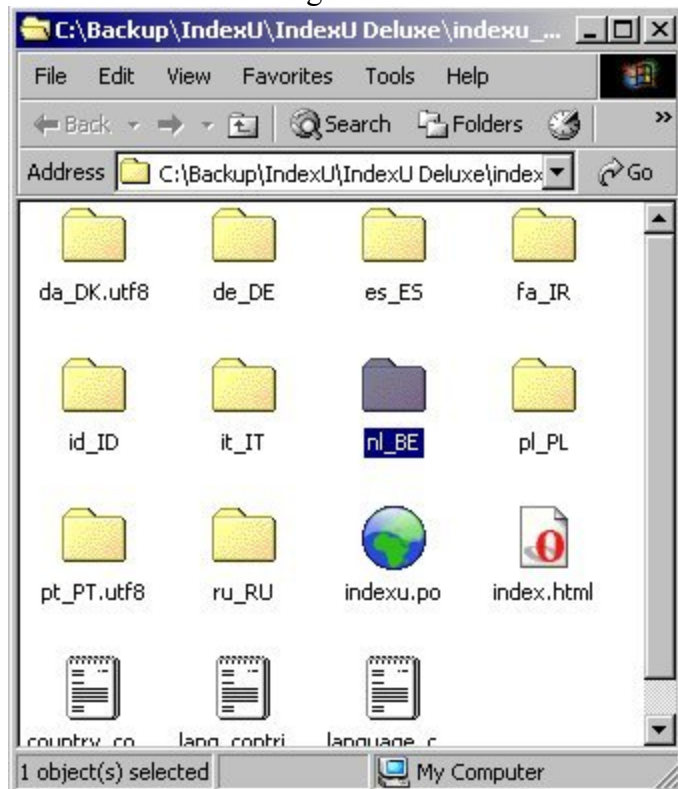
PHP must be compiled with gettext

Step 3 - Examine The Structure

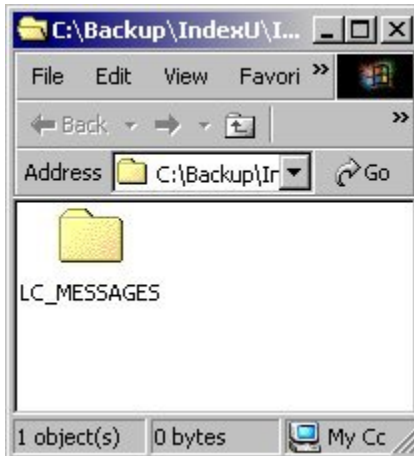
First lets examine the structure of what is inside the language directory. This will also give users who are creating translations for IndexU details on exactly where the files go. First is a screenshot of the folders inside the IndexU zip archive.



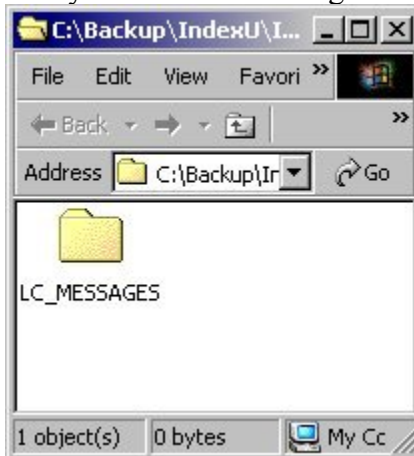
Double click on the lang folder and we see the directory below.



For this example we will use the folder nl_BE. This name is VERY IMPORTANT, I will tell you why later. Double click on it and you see the following folder. It's name is also VERY IMPORTANT but will never change. It is called LC_MESSAGES and must be upper case. Always. Double click on it.



And you see the following directory with the files indexu.po and indexu.mo.



Notes:

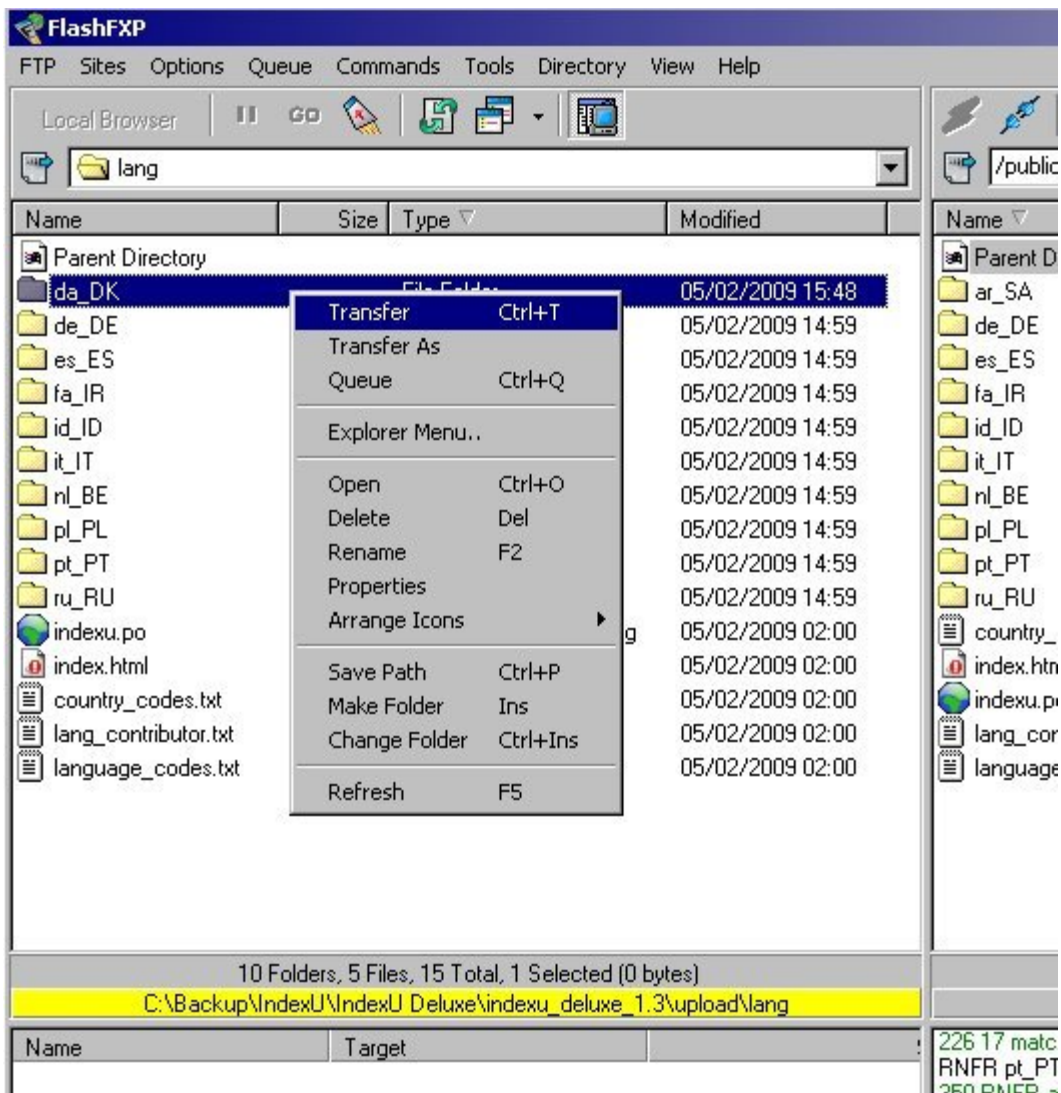
If you are writing a translation for IndexU your structure must look exactly like the above with all of the file names and directory names exactly as shown. For the name of the language file the following directions are to be used

There is a primary subtag (in the case above it nl) that identifies the language and an optional subtag in capital letters that specifies the national variety (BE) that are seperated by an underscore.

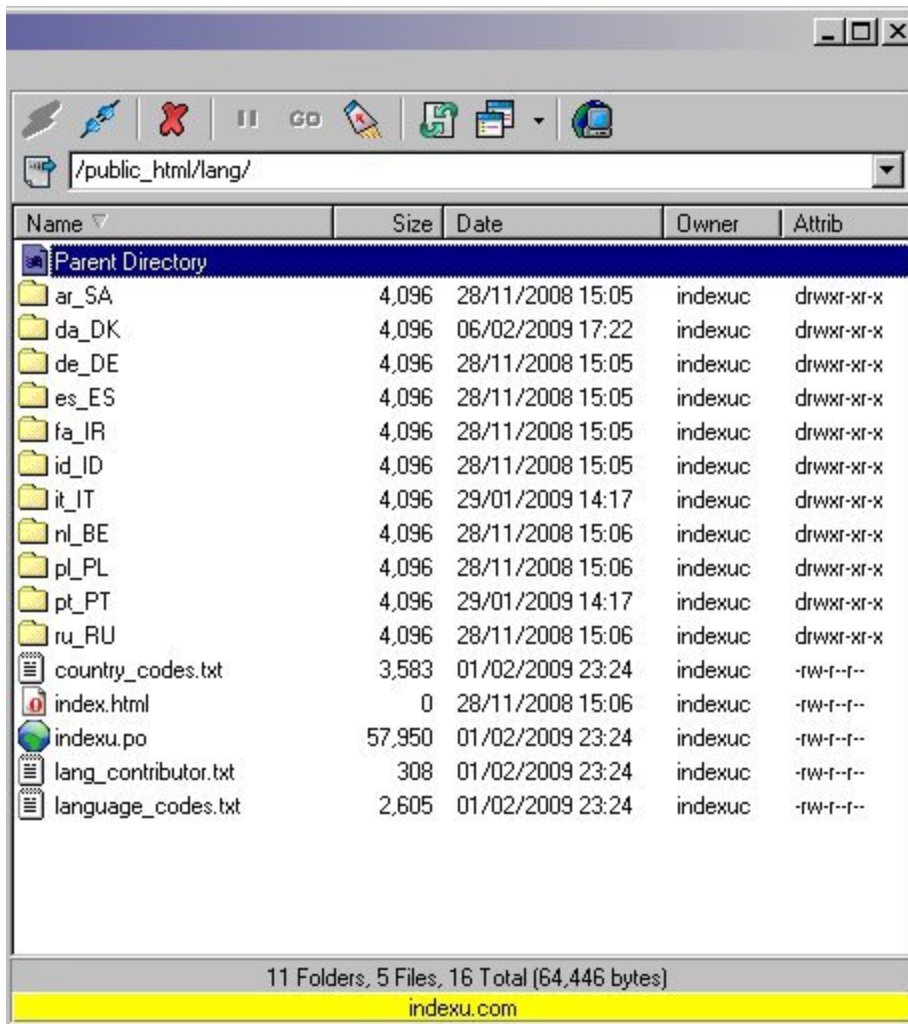
Some examples include en_CA for english Canada, pt_PT for Portuguese Portugal, pt_BR for Brazilian Portuguese.

Step 4 - Uploading a new language file

Using your FTP program upload the complete directory to your site and place it inside the /lang/ directory.



And finally your language directory should look like it does below.

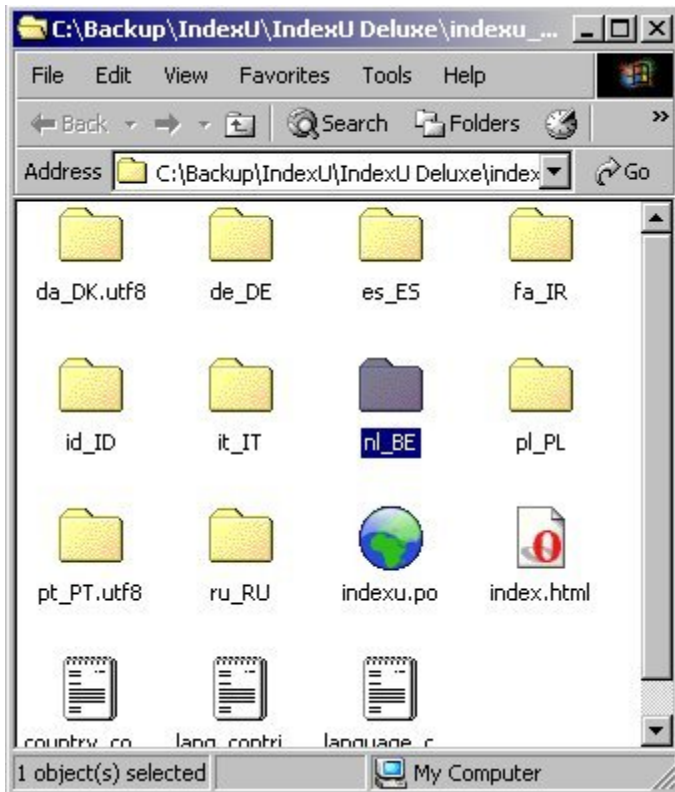


Your new language file is installed and ready to go!

Step 5 - Language File Issues

In some cases a translation does not work. We see this mostly on translations that include double byte characters. There is a simple workaround that can solve this issue.

For most users, simply changing the directory name solves the issue. In the screenshot below you can see two examples of directories that have been renamed.



da_DK has been renamed to da_DK.utf8 and pt_PT has been renamed to pt_PT.utf8. In one case a user had to rename the file to end in .UTF8 so their language directory looked like pt_PT.UTF8. Please try both ways before contacting support if you are having issues.

Note: Do NOT change any other files or directories, only the main directory.

[Return to the top](#)